

Deckshield ED Rapide



Description

Deckshield ED Rapide is a methyl methacrylate car park deck coating system providing a colourful watertight, hard wearing surface for exposed decks. Deckshield ED Rapide has been developed to enable very fast track applications, therefore dramatically reducing program time.

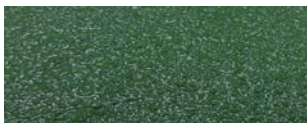
Uses

To cosmetically enhance, reduce noise, and make exposed deck car parks brighter, safer environments to visit. Deckshield ED Rapide is suitable for refurbishment of existing car parks and new construction projects.

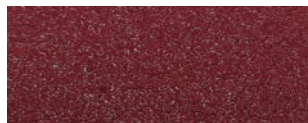
Benefits

- Fast curing and rapid installation
- Aesthetically attractive – brightens up dull, dark, musty car parks
- Reduces noise- greatly reduce tyre squeal
- Hard wearing- high abrasion resistant
- Fire resistant
- Slip resistant
- Excellent bond strength

Standard Colour Chart



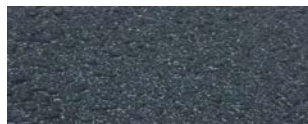
Forest Green



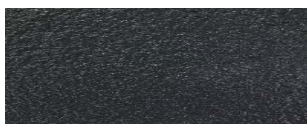
Tile Red



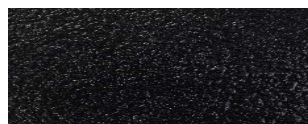
Goosewing Grey



Mid Grey

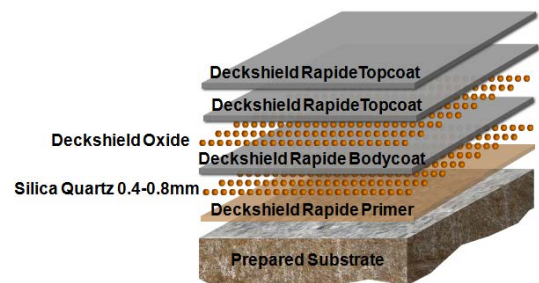


Dark Grey



Black

System Design



The applied colours may differ slightly from the examples shown above. Contact our customer services for a true colour sample or a special colour match.

Model Specification

Product: Deckshield ED Rapide system
Finish: Textured (anti-slip)
Preparatory work and application in accordance with manufacturer's instructions.
Manufacturer: Flowcrete Asia Sdn. Bhd.
Telephone: Customer Service - +603 6277 9575

Substrate Requirements

Concrete or screed substrate should be a minimum of 25 N/mm², free from laitance, dust and other contamination. Substrate should be dry to 95% RH as per BS8204. The system cannot be applied in direct sunlight or if there is an existing sub-slab DPM.

Products Included in this System

Deckshield Rapide Primer
Silica Quartz Scatter 0.4-0.8 mm
Crack Banding Treatment (see Method Statement)
Deckshield Rapide Bodycoat
(Flowfast Flexible Binder with Flowfast SNL Filler)
Deckshield Oxide 0.7-1.2mm
Deckshield Rapide Topcoat

Note 1: Alternative specifications are available for steep ramps and ramps with severe camber.

Note 2: The type of resin used and catalyst dosage are temperature dependant. Please consult Flowcrete for further advice.

Note3: Technical proposals are specifically written for each installation which may require substrate details and site survey report.

Detailed application instructions are available upon request.

Installation Service

The installation should be carried out by a Flowcrete approved applicator with a documented quality assurance scheme. Obtain details of our approved contractors by contacting our customer service team or enquiring via our web site at www.flowcrete.com.my.

Environmental Considerations

The finished system is assessed as non-hazardous to health and the environment. The long service life and seamless surface reduce the need for repairs, maintenance and cleaning. Environmental and health considerations are controlled during manufacture and application of the products by Flowcrete staff and fully trained and experienced contractors.

Focus on the Floorzone

Flowcrete Asia Sdn Bhd is a division of the Flowcrete Group, world leaders in specialist industrial and commercial flooring. Systems available include: underfloor heating systems, floor screeds, surface damp proof membranes, decorative floor finishes, seamless terrazzo, car park deck waterproofing and corrosion protection systems... to name just a few. Our corporate objective is to satisfy your flooring needs.

Flowcrete Asia Sdn Bhd (366254-X)
The Flooring Technology Centre
Lot 37631 & 37632, Jalan 6/37A,
Taman Bukit Maluri,
Industrial Area Kepong,
52100 Kuala Lumpur, Malaysia.
Tel: +(603) 6277 9575
Fax: +(603) 6277 4645
Email: malaysia@flowcrete.com
Flowcrete Asia is an RPM company

Flowcrete Thailand
522/41, Baan Klang Muang 1,
Soi Sahakarnpramoon,
Pracha-Uthit Road,
Wangthonglang, Bangkok, 10310.
Tel: (662) 2530 9611
Fax: (662) 2530 9610
E-mail: thailand@flowcrete.com

Flowcrete Indonesia
2nd Floor, Suite 203,
Palma One Building,
Jl. HR Rasuna Said Kav. X2 No. 4
Jakarta Selatan 12950, Indonesia.
Tel: +6221 252 3201
Fax: +6221 252 0720
E-mail: indonesia@flowcrete.com

Flowcrete Vietnam
Representative Office
3rd Floor, 130 Nguyen Cong Tru Street,
Nguyen Thai Binh Ward,
District 1, HCMC, Vietnam
Tel: +848 3821 6561
Fax: +848 3821 6501
E-mail: vietnam@flowcrete.com

Technical Information

The figures that follow are typical properties achieved in laboratory tests at 20 °C and at 50% Relative Humidity.

Fire Resistance	BS 476-3: Designated EXT.F.AA
Slip Resistance	TRRL Pendulum Slip Test Dry >40, Wet >40 (low slip potential)

Textured systems are recommended to meet slip resistance value requirements for wet conditions and/or surface contaminants (wet or dry) - please contact our Technical Advisors for further details and specifications

Water Permeability	Nil – Karsten test (Impermeable)
Chemical Resistance	Contact Technical Department Resistant to petrol, diesel, antifreeze, hydraulic fluid, chlorides and battery acids.
Resistance to chloride ions	DOT BD47/94: Appendix B, Method B4,2(d). Result: No chloride ion penetration after 28 days

Bond Strength	Greater than cohesive strength of 25 N/mm ² concrete. >1.5 MPa.
Crack Bridging	0.5mm (banded area only)
Abrasion Resistance (measured on topcoat)	Taber Abrader 300 mg loss per 1000 cycles (1 kg Load using CS17 wheels)
Tear Strength	BS 903 Test Result = 35 KN/M

Speed of Cure (per layer)

Full traffic	1 hour
Full chemical cure	1 hour

Aftercare - Cleaning and Maintenance

Clean regularly using a single or double headed rotary scrubber drier in conjunction with a mildly alkaline detergent (without solvents).

Important Note

Flowcrete's products are guaranteed against defective materials and manufacture and are sold subject to its standard Terms and Conditions of Sale, copies of which can be obtained on request.

Further Information

To ensure you are specifying a fit for purpose flooring for your project please consult our Technical Advisors on the number below or visit our website to register your interest in specifying one of the most durable floors on the market.